



## Read to a Child

Read to a Child is a national nonprofit organization that creates better opportunities for children and strengthens society as a whole by inspiring adults to read aloud to children. Read to a Child's flagship lunchtime reading program pairs business professionals with students for weekly one-on-one reading sessions at underserved schools.

“I like when Bob\* comes to read with me because he is funny and makes me feel comfortable while we read together.”

4TH GRADE STUDENT



## Dear Friend of Read to a Child

### Here is what happened this year because of you:

- A small boy read Dr. Seuss' *Horton Hears a Who* with his mentor for the first time.
- A nine-year old girl who is at risk of failing her grade enjoyed the classic story *Charlotte's Web*.
- A third grade English language learner learned about outer space from Miss Frizzle in *The Magic School Bus*.

However, not all children have the same opportunity to experience reading and to build a love for books. According to the National Research Council Report, *Preventing Reading Difficulties in Young Children*, “students who, by the end of third grade, are not moderately skilled readers are unlikely to graduate from high school.” There is a simple but powerful way to take action and address the literacy crisis in this country: **Reading to a child is the single most important activity for building the knowledge required for success in reading — and consequently, in life.**

Read to a Child’s vision is for all children to be read to regularly by a caring adult, increasing their chances to become healthy, productive members of society. Our flagship lunchtime reading program matches thousands of business professionals with at-risk children, one-on-one, for weekly reading sessions during lunchtime at underserved elementary schools.

On behalf of our Board of Directors and dedicated staff, thank you for sharing our passion for changing the future for our nation’s children—one book at a time. We invite you to become even more involved in the years to come.

Sincerely,



A handwritten signature in black ink, appearing to read 'Chris Thomas'.

Chris Thomas (Board Chair)



A handwritten signature in black ink, appearing to read 'Olivia Mathews'.

Olivia Mathews (CEO)

\*Names have been changed



# Why Read to a Child?

*Because reading to a child is the single most important thing you can do to help a child succeed in reading.*



“Whenever I see the coordinator and the books in the lobby, I know it is going to be a good day!”

MAX\*, GRADE 3

“I’ve been involved in the organization for the past three years and have had the chance to work with two kids over that time. The kids came from low-income families and weren’t doing great in school. Throughout my time with them, I saw them grow and truly develop an appreciation for reading as well as a bond with me that motivated them to become better readers. The confidence helped to boost their grades and approach school from a different perspective.”

VOLUNTEER READING MENTOR



“I love Read to a Child because it makes my day to see a child’s face light up as they walk into the reading room with their lunch tray in hand. They are always so eager to see their mentor and I can tell that they feel so special when they participate in the program.”

SCHOOL COORDINATOR

“For over ten years, Read to a Child’s program has made a significant impact on the children at our school. Having adults take the time to give individual attention to some of our most vulnerable students brightens the children’s day and gives them something positive to look forward to every week. As simple as it may sound, having someone read one-on-one with the students offers a much deeper connection to the community outside of school and to the progress of the children in school.”

PRINCIPAL



“As a volunteer, I look forward to reading to my buddy each week and have enjoyed getting my law firm involved in our reading program. Our mentors realize how big of a difference their small time commitment can make—by immersing themselves in the fun of a colorful picture book or the adventure of a chapter book and experiencing the energy and enthusiasm of children, our volunteers enjoy the benefits, too.”

REGIONAL BOARD MEMBER  
& VOLUNTEER READING  
MENTOR

“I do what I do because I believe Read to a Child makes a significant positive impact on the life of a child. It is evident in the face of a third grade boy peering around the corner with his lunch tray as he smiles widely and says, “There you are!” to his returning mentor after summer break. That is what it is all about: caring, support, and enjoying reading together.”

READ TO A CHILD  
STAFF MEMBER

# Snapshots of our locations

**Boston** Read to a Child reached many exciting milestones in the 2013–2014 school year in Boston. Since our inception in 2002, we are grateful for the dedication and commitment of over 3,300 volunteer reading mentors who have served over 2,600 high-risk students in greater Boston through over 160,000 lunchtime reading sessions.

Read to a Child was generously awarded donated office space to establish a Boston Headquarters which serves as a place for the development of ideas, collaboration, and best practices. This space provides the opportunity for Read to a Child staff to share challenges and successes, and mentor one another. It also serves as the hub for our Boston Board to continue their inspirational work on behalf of students.

In the 2013–2014 program year, the valuable input from staff, board, and stakeholder meetings fueled the greater Boston program team to implement customized book collections, specific to the interests and needs of each local partner school. Input from over 17 essential part-time coordinators also guides the incorporation of mentor feedback as we continue to strengthen the program to reach even more children in greater Boston in the future.

**Connecticut** The lunchtime reading program in Connecticut reaches children in high need Hartford and New Britain communities, where two-thirds of third graders are reading below grade level. Thanks to our committed volunteer reading mentors, Read to a Child provided 2,500 one-on-one reading sessions for these students in 2013–2014. Children who participated in the program made great strides in literacy skills and socio-emotional development, with 86% of students making measurable progress in one or more of the areas measured. Classroom teachers reported that students also gained exposure to new ideas, knowledge, opportunities, people, and places through their weekly reading. Reaching more children is imperative as Connecticut has the largest achievement gap of any state in the country.

**Detroit** We are committed to increasing opportunities for success for the young people of Detroit — Read to a Child’s newest location. In the city of Detroit, The National Institute for Literacy estimates that 47% of adults (more than 200,000 individuals) are functionally illiterate. Detroit is known for its resiliency and determination and we are excited to take part in preparing Detroit’s children to contribute to the future of a thriving city.

In 2013–2014, we served nearly 100 students in two elementary schools with volunteer reading mentors reading hundreds of books — this marked a 400% growth of the program in just one year. We continue to build strong hands-on engagement from civic-minded corporate and community partners who support our mission to impact many more underserved children in the coming years.

“Read to a Child's program inspires adults and children to enjoy books together and develop a life-long love of reading!”

PRINCIPAL AT PARTICIPATING SCHOOL

**Los Angeles** Over 5,100 hours of individualized reading sessions were provided by Read to a Child's volunteer reading mentors in seven Los Angeles County schools in the 2013–2014 school year. This year, the Los Angeles staff was expanded through the hiring of a Program Manager who has contributed to the successful and sustainable growth of the program.

The transformative impact of the lunchtime reading program in Los Angeles can be seen in the lives of the children like Anna\*, a fifth grader who has been in the program for the past four years:

*Anna was so inspired by her volunteer reading mentor that she now reads regularly to her four year old sister. Like many of our English language learner students, Anna was not being read to before entering the program. She likes the lunchtime reading program and loves to pronounce new words from different books and stories. Anna's favorite time at school is coming to the lunchtime reading program each week because she gets to read with her "reading buddy" and spend time on books. Anna is becoming a life-long reader and is now instilling the same values in her four year old sister, before she even begins attending school.*

**South Florida** During the 2013–2014 school year, Read to a Child provided over 900 individualized reading sessions in our Miami schools, engaging volunteer reading mentors in a region with a child poverty level of nearly 30%, eight percentage points higher than the national child poverty rate. On average, 72% of students in the schools we serve are from low income households. Volunteer reading mentors in Miami are dedicated and enthusiastic, with 98% saying that their overall volunteer experience with Read to a Child is excellent or above average.

**National** In the 2013–2014 school year, Read to a Child brought weekly lunchtime reading sessions to over 1,100 underserved children across the country. This amounted to over 33,000 sessions between nearly 1,500 caring volunteer reading mentors and at-risk students who urgently needed the extra literacy and socio-emotional support.

Read to a Child's national staff implemented a number of changes to strengthen the organization and increase efficiency across the country. After a rigorous selection process, Read to a Child was chosen for a one-year strategic planning project, focused on growth and expansion for the next five years, with Harvard Business School alumni who conduct pro-bono consulting as part of Community Action Partners (CAP). Read to a Child also launched an online volunteer training course that enabled staff members to train volunteer reading mentors remotely, greatly increasing efficiency during the busy fall kickoff season.

As we continue to expand nationally to reach more children, ask yourself—why read to a child? The answer is clear: because in this fast-paced, digital age, when you slow down and share a story with a child, you inspire that child to imagine a future full of possibilities—for herself and for the world around her.

**"It's so rewarding for me as a volunteer—I really look forward to the weekly reading sessions, and I'm thankful my employer supports the program!"**

READ TO A CHILD MENTOR



## PROGRAM STATS

(2013–2014 SCHOOL YEAR)

**33,000 hours**  
of one-on-one reading time

**1,474 volunteers**

**1,111 students**

## VOLUNTEER STATS

**92%**

of volunteers agreed with the statement:

I feel good about working for a company that offers opportunities for community involvement such as lunchtime reading.

**94%**

of volunteers agreed with the statement:

I would recommend the lunchtime reading program to my friends and co-workers.

## TEACHER STATS

**92%**

of teachers believe that their students gained increased enthusiasm towards reading as a result of the lunchtime reading program. This percentage increases to 96% when asking mentors the same question.

**70%**

of teachers report that their students demonstrated greater levels of self-confidence as a result of their participation in the lunchtime reading program.

## CHILD STATS

**88%**

of participating students made measurable gains in one or more of the following areas: vocabulary, listening comprehension, ability to articulate thoughts, self-confidence, enthusiasm for books and reading, and overall reading ability.

# Board of Directors and Leadership

## Board of Directors

### **Chris Thomas, Chair**

*Founder and Partner*  
Fontinalis Partners

### **Ted Stimpson, Vice Chair**

*Chief Executive Officer*  
Smart Destinations

### **Ashim Mehra, Treasurer**

*Research Analyst*  
Baron Capital

### **Julie Solomon, Secretary**

*Deputy General Counsel*  
Pitney Bowes

### **David Brewer**

*President*  
Brewer Leadership Group, LLC

### **Phil Cowdell**

*President, Client Services*  
GroupM

### **Phil Harrell**

*Senior Vice President, Sales & Marketing*  
Firecracker

### **Olivia Mathews**

*Chief Executive Officer*  
Read to a Child

### **Robert Murray**

*Global CEO*  
Skyword

### **Tracy Pearce**

*Global Corporate Social Responsibility  
Engagement Manager*  
Dentsu Aegis Network

### **Joan Pierre**

*Director of Change Management*  
American Express

### **Arthur Tannenbaum, Honorary Member**

*Founder*  
Everybody Wins!

## Leadership

### **Olivia Mathews**

*Chief Executive Officer*

### **Kaela Vronsky**

*Vice President, Program Management*

### **Beth Putnam**

*Director of Finance and Operations*

### **Alex Fey**

*Los Angeles Director*

### **Danielle Hilliker**

*Detroit Director*

### **Kate Holzman**

*Connecticut Director*

### **Kristen Baxter**

*Boston Director, Development*

### **Linda Winin**

*Boston Director, Program*

## National Council of Regional Board Chairs

### **BOSTON**

#### **Chris Anderson**

Anderson Robbins Research

### **CONNECTICUT**

#### **Matt Lotfey**

RT Specialty

### **DETROIT**

#### **Mike Kaczmarek**

Rockbridge Growth Equity

### **LOS ANGELES**

#### **Eva Davis**

Winston & Strawn LLP

### **SOUTH FLORIDA**

#### **Jose Romero**

Housing Trust Group

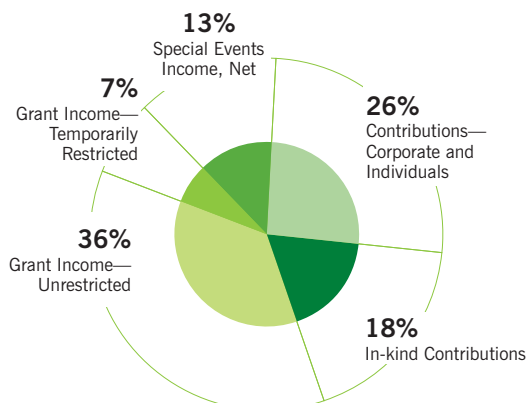


# Financials

for the fiscal years ending 9/30/14 and 9/30/13

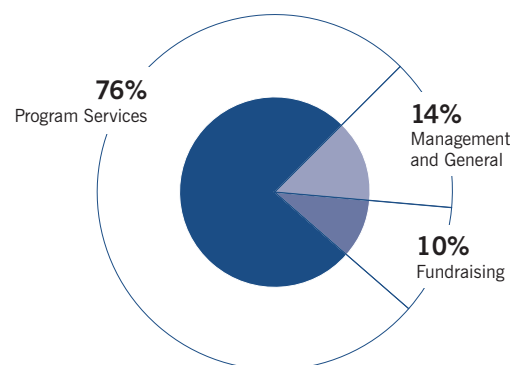
Support and Revenue	FY14	FY13
Contributions	\$292,861	\$459,683*
Grant Income - Unrestricted	407,526	352,277
Grant Income - Temporarily Restricted	76,000	26,667
Special Events Income, Net	145,882	117,305
In-kind Contributions	209,762	172,330
Other Revenue	(478)	626
<b>Total Support and Revenue</b>	<b>\$1,131,553</b>	<b>\$1,128,888</b>
<b>Expenses</b>		
Program Services	\$834,696	\$661,828
Management and General	168,616	192,154
Fundraising	105,173	70,949
<b>Total Expenses</b>	<b>\$1,108,485</b>	<b>\$924,931</b>
<b>Increase in Net Assets</b>	<b>\$23,068</b>	<b>\$203,957</b>
<b>Assets</b>	<b>9/30/14</b>	<b>9/30/13</b>
Cash and Cash Equivalents	\$460,106	\$436,558
Other Current Assets	26,268	22,714
Property and Equipment, Net	45,160	35,370
<b>Total Assets</b>	<b>\$531,534</b>	<b>\$494,642</b>
<b>Liabilities and Net Assets</b>		
Deferred Income	\$71,250	\$63,875
Other Current Liabilities	33,898	27,449
Unrestricted Net Assets	350,386	376,651
Temporarily Restricted Net Assets	76,000	26,667
<b>Total Liabilities and Net Assets</b>	<b>\$531,534</b>	<b>\$494,642</b>

## FY14 Support and Revenue



## FY14 Expenses

(excluding in-kind of \$210K or 19% of total expenses)





# Donors FY14 for the fiscal year ending 9/30/14

## CORPORATE & FOUNDATION DONORS

Acadian Asset Management	Dentsu Aegis Media	Los Angeles Lakers
Agero	DIRECTV	Mass Mentoring Partnership
Allied World Assurance	Discovery Communications	Mass Mutual
Alston & Bird	Doe Family Foundation	Massachusetts Medical Society
Alydar Partners	Dornam Foundation	McKool Smith
Amazon	DTE Energy	Microsoft
American Express Foundation	Eagle Investment Systems	Mintz, Levin, Cohn, Ferris, Glovsky, & Popeo PC
Anderson Robbins Research	East Boston Savings Bank	MIT Community Service Fund
Anonymous Donor Advised Fund at Fairfield County Community Foundation	Eastern Bank Charitable Foundation	Mitchell Communications Group LLC
ArcLight Capital Partners	Eaton Vance	Moses Kimball Fund
Assurant	Eduventures	Mutual One Charitable Foundation
Baron Capital	Ellen A. Gilman Trust	New York Life
Berger Management	EMC Corporation	NewAlliance Foundation
Berman Family Foundation	EMD Millipore	Newport Trial Group
Biogen Idec Foundation	Ensworth Charitable Foundation	Partners Healthcare
Blackbaud	Ernst & Young	Pitney Bowes
Bloomberg	Fanny & Svante Knistrom Foundation	Pitney Bowes Foundation
Blue Hills Bank Charitable Foundation	First Service Residential	Prudential
BNY Mellon	Fisher Foundation	Quicken Loans
BNY Mellon/Alice P. Chase Trust	Fontinalis Partners	Rodman Ride for Kids
Bose	GE Foundation	Rotary Club of Los Angeles
Boston Bruins Foundation	Gentle Giant Moving Company	Rothschild Family Foundation
Cabot Corporation	George Family Foundation	Schroders Investment Management
California Community Foundation	German American Ladies Society	Sealy Smith Charitable Foundation
Cambridge Community Foundation	Greenberg Traurig	Seyfarth Shaw
Candlewick Press	Hayden Family Charitable Trust	Staples
Capital Group Companies	Holland & Knight	Staples Center Foundation
Carat	Hollister Staffing	Sun Life Financial
CDM Smith	ING	Target
Central Electric Specialty Corporation	Innovation Capital	The Architectural Team
Charles River Associates	iProspect	The Children's Trust
Clinton & Wilma Shattuck Charitable Trust	James Group International	The Hartford
CMGRP, Inc.	John H. and H. Naomi Tomfohrde Foundation	ThermoFisher Scientific
Cohen Family Charitable Fund	JRLW Partners	TJX Companies
Commonwealth Financial Network	Key Information	Travelers Foundation
Confidence Foundation	Kirkland & Ellis	Tufts Health Plan
Corporate Executive Board	Lee Kennedy Company	Verizon
CTP Boston	Lee Tran & Liang	Wayfair
CVS	Level One Bank	Weingart Foundation
Delaware Life	Lewis, Brisbois, Bisgaard & Smith	William & Lisa Ford Foundation
	Liberty Mutual Foundation	Winnick Family Foundation
	Lois Lenski Covey Foundation	Winston & Strawn

## INDIVIDUAL DONORS

Ton Aan de Stegge	Janet Alesevich	Kristin Anagnost	Gabriela Ansari
Anna Abate	Elaine Alexis	Chris Anderson	Keith Antifonario
Antoine Abeille	Robert Alkon	Deborah Anderson	Peter Appel
Judith Achermann	Thomas Alongi	Jennifer Anderson	Stephanie Aragon
Mark Adamszyk	Michael Altchek	Peter Anderson	Charles Ardai
Ade Adenaike	Josef Alves	Stephen E. Anderson	Peter Arden
Anuj Aggarwal	Pouncy Ambriel	Steve Anderson	Robin Arnone
Emily Agostino	Christine Ambrose	Maribeth Annaguey	Joanne Aronovitz
Anthony Ahee	Patricia Ambrose	Rosemarie Annese	Frank Aronson
Megan Ahee	Stanley Ames	Amelie Ansari	Valerie Arpino

## INDIVIDUAL DONORS (continued)

John Arseneault	Jonathan Blum	Denise Chan	Chris & Joanna Cullinan
Chris Arthur	Lindsey Blumenthal	Jenny Chan	Hugh Cullman
Jennifer Ash	Greg Bobrow	Feng Chang	John Cullon
Darlene Assensoa	Holly Bodman	Gabriel Chapman	Patty Cummings
Dean Atkins	Mike Bonomo	David Charbonneau	Tracy Cummings
Vernice Atkins-Bradley	Sherle Boone	Katie Chasson	Andrew Curoe
Rebecca Atwell	Ralph Booth	Christopher Cheever	Elton Dabiri
Nicholas Aubrey	La-Vie Borde-Perry	David Cheever	David & Kristina Daglio
Tom Aubrey	Carolyn Bosa	Catherine Chen	Ann Daley
Brian Back	Kelly Bougere	Lenny Chesal	Erin D'Amadio
William Baggeroer	Dylan Boyd	Erika Chim	Laura D'Ambrosio
Judy Bahary	Steven Boyd	Allison Chock	Judith Danforth
Sandra Bailey	Krystyna Boyer	Yejin Chong	Philippe Daniel
Danielle Baker	Reed Brady	Kathy Christianson	Sean Datcher
Marsha Baker	Sarah Braga	Michael Christopher	Barbara Davis
Amy Ball	Brenda Brandom	Ella Clark	Eva Davis
Nathan Ballentine	Craig Brandon	Cynthia Clemson	Michael Day
Deana Barakat	James R. Brannon	Dennis Coffey	Clive de Freitas
Angela Barbero	Shannon Breen	Jeff Coffler	Mary Ann Deaktor
Vincent Bareges	David Brewer	John Cogan	Brian Decker
Lauren Bargmann	Mildred Brewer	Solomon Cogan	Orchid Deer Dalomba
Paul Baril	Timothy Brewer	Jacob Cohen	Jason Degnan-Rojeski
Bryant Barr	Rudolph Brewington	Jake Cohen	Elizabeth Dehler
Alice Basoms	Donald Brezinski	Naomi Cohen	Neil Deininger
Emily Batchelder	Joel Brightman	Jillian Collins	Abby & Jason DeMarzo
Greg Batcheler	Lin Brightman	Kevin Colton	Susan DeMarzo
Charlene Bauer	Matthew Brightman	Susan Comeau	Don Dempsey
Michael Bauer	Terri Brode	Mary-Ellen Coniaris	Frank DePino
Karen Baxter	Matthew Broder	James Conklin	Paul Derby
Jean Beattie	Jess Brooks	Cathleen Connors	Antonette N. Desir
Katharine & Michael Beattie	Elisa Brown	Fred & Kathy Conover	Simone DeSousa
Joseph Beaumont	Kathleen Brown	Caitlin R. Convery	Brooks Dexter
Kate Becker	Christina Bruno	Aja Conway	Stuart Diamond
Nancy Beekman	Norman Bryan	Peter Cook	Lawrence Dicara
Naomi Beer	John Bryant	Margery Cooper	Alicia Diem
Melanie Behrens	Sue Burhop	Richard Cooper	Catherine Diethorn
Karl Benedict	Melissa R. Burkland	Jonathan Cooperman	Paul W. DiMaura
Robert Benjamin	Armistead Burks	Brian Cope	David & Patricia Dobies
Ryan P. Benson	Chris Burt	Kathleen Corcoran	Susan Doerflinger
Moana Bentin	Alex Butensky	Jody Cornish	Chris Doherty
Gregory Benton	Michael Byrne	Lucille Correnty	Kerry Doman
Randy Bergel	Kristine Calara	Martin Corry	Danielle Domingos
Justin Berke	Teresita Calderone	Emily Corwin	Jennifer Dominguez
Joe Berman	Rachel Calhoun	Neil Corwin	Jane Donaghey
Brenda Bernard	Rebecca Calhoun	Chris Cosmides	Carolyn Donaldson
Charles Berne	Jason Capracotta	Lori Cote	Deb Doncov
Mary Frances Bernest	Tyler Carey	Donna Coughlin	Wendy Doran-Paley
Carole Bersani	Linda Carlson	Jennifer Coulombe	Amy M. Dorazio
George Berwanger	Lisa Carman	Harry Courtenay	Maureen Doucakis
Lauren Bigelow	Roderick Carmody	Cheryl Cowdell	Leonora Douglas
Ira Bindman	Jill Carney	Philip Cowdell	Shelley Draper
Adrian Bishop	Mary A. Casaceli	Jon Cowen	Ivan Dremov
Brad Bishop	Rich Casaceli	Rebecca Cox	Charles Dublin
Damian Black	Alanna Casey	Sandra Crandall	Sarah Duggan
Nicola Blaha	Henry Casey	Alex Creighton	Molly Dupes
Rachel Blake	Laurie Cavanaugh	Brad Crevier	Stanley & Tara DuPlaga
William Blake III	Rosanna Cavanaugh	Joseph Crimmins	Chris Durbin
David Bloom	Jonathan Chadbourn	Kevin Crosby	Paul Durbin
Jamie Bloom	Kyle Chadwick	Mark Crowley	Kevin Dutt
	Daniel Chamness	Katherine L. Cruise	Heidi Eagles
	Cindy Chan	Maria Luisa Cruz	Cassandra Earley

## INDIVIDUAL DONORS (continued)

Frances Early	Joyce Gabbert	Tami Guimelli	Latoya Ingram
Tiffany Easton	Kathy Gallery	Dorree Gurdak	Erica Intzekostas
Catherine Economakis	Mohini Gandhi	Mark Guzzetta	Zena Intzekostas
Anita Edwards	Lisa Ganley-Leal	Stacey Haas	Sany Iskandar
Gretchen Effgen	Maricor Garaniel	Amy Haimerl	Alexander Israel
Robert Eisman	Renee Garnet	Marissa Hajtler	Jim Jacobs
Kris Emmons	Cindy Garni	Sheryn Hajtler	Dan & Jordana Jaffee
Geoff Endris	Emily Gaylord	Bill Hall	Razi Jafri
Robbyn Ennis	Anna Gedman	Bev Halliday	Gaurav Jain
Jeffrey Esquillo	Susan Gentili	Maya Hamilton	Lorron James
Jeff Estella	Adam George	Stephanie Hansen	Maureen Jansen
Ellen Evans	Aleene & Joseph George	Benjamin Harding	Deborah Janusis
T. Evans	Deborah George	Edgar Harrell	Jiyeon Jeon
Shannon Eyler	Matthew George	Erik Harrell	Dana Jessup
Sheppard Faber	Nicole George	Matthew Harrell	Johanna Culloty Jobin
Ileana Faia	Sarah George	Paula Harrell	Robert Johanek
Colleen Fain	Frank Gersony	Brooke & Phil Harrell	Beth Johnson
Stephanie Falite	Steve Gersony	Diantha Harrington	Curtis & Margery Johnson
Mark Farber	Shelton Getter	Andrea Harris	Debra Johnston
Rena Faria	Kimia Ghalambor	Joseph Harrold	Brian Jones
Marilyn Farnell	Auntora Ghosh	Peter Hartley	Colin & Jennifer Jones
Jacqueline Farnen	Laurie Giannaros	Holly Hartman	Julian Jones
Kimberly Farnen	Pamela Giannatsis	Josh Hartman	Timothy Jones
Mark Farnen	Stanley Gibson	Thomas Hartwell	John T. Jones Jr.
Laura Farquhar	Elizabeth Gilbert	William Harvey	Andrew & Barbara Joseph
Linda Farrell	Emma Giles	Rashanda Hassel	Betsy Joseph
Paul Farrell	Tamera Gillerman	John Hater	Ritu Jyoti
Tracy Pearce & Ned Farrell	Deborah Gilpin	Julie Havey	Edan Kabatchnik
Jack Fatou	Chrissy Giordano	Derek & Donna Hayden	Andrea Kaczmarek
Jennifer Fernandes	Ruth Gitlitz	Heidi Hayes	Michael & Meg Kaczmarek
Robert Ferrara	Stuart Gitlitz	Frank Hewitt	Melissa Kaempfer
Wayne Ferrari	Paul Giudice	Tricia Hexter	Howard & Judith Kahalas
Scott Ferrell	Celso Giusti	Michael Higgins	Ambuja Kajeepeta
Alex Fey	Grant Glass	Robert Higgins	Ann Kamensky
Petra Fey	Patricia Glaza	James Hildebrand	Norman Kane
Sarah Fey	Marisa Goldberg	Erin Hines	Henry Kanter
Xander Fey	Jennifer Rapaport & Mike Goldstein	Patricia Hinojosa	Adam Kaplan
Carmen Fields	Aniella Gonzalez	Carolyn Hinton	Julie Katz
Glenn Fincke	Gina Gonzalez	Davie & Minta Hissong	Paulomi Katzive
Susan Finegan	Jose Gonzalez	Andy Hochberg	Adam Kaye
Michael Fisher	Laura Goodman-Bryan	Robert Hochman	Irene Kaynor
Sheila Flemming	Robert Goodof	Jonathan Hodge	Maura Kelly
Dan Fleurinor	Alessandra Gordon	Ruth Hoffman	Melissa Kelly
Maria Flores	David Gordon	Jason Hoggard	Peter Kelly
Scott Fontaine	Judith Gordon	Sean Holiday	Ryan Kelsey
Brent Forester	Jillian Gorelick	Kimberlee Holliday	Patrick Kenealy
Steve Fortney	Zita Gotauco	Adam Hollier	Philip Kennedy
Devaughn Fowlkes	Shana Goteh	Kate Holzman	Blake Kenny
Fred Fordon	Abigail Goward	Ryan Horgan	Daniel Keough
Jay & Jessica Fox	Robin Grace	Jamie Horst	Thoma Kern
Gina Franco	Geraldine Graham	Denise Houghton	Cemone Khan
Jessica Franco	Gillian Graham	Jed Howbert	Mark Kiefer
Michael Frankel	Tessa Graham	John Howbert	Elaine Marie Kiley
Bill & Vicki Frawley	Regan Grant	Angelene Huang	Kristen Kiley
Jason Fredlund	Keri Greene	Lucy Huang	Thomas Kilgore
Brennan Freeman	Alicia Greenleaf	Amy Hughes	Casey Kilkenney
Sylvia Frerk	Richard Greif	Carolyn Hull	Tim Killen
Judith & Richard Frothingham	Michael Grimes	Ryan Hunt	Ruth Kilungu
Samantha Funt	Carlton Grose	Tricia Hunt	Curtis King
Lindsey Fural	Ed Guillen	Kim Hunter	Ellen King
		Kristine Hyde	Lisa King

## INDIVIDUAL DONORS (continued)

Linda Kingston	Marc Lindemann	Jane Mattes	Dani Morello
Kate Klim	Bruce Lindsay	Lillian Mattes	Susan Morris
Jim Klopper	Darren Linkstrom	Drew Matzkin	Keith Morris
Melissa Raciti & Jon Knapp	Roger John Lisinski	Candice Maynard	Karen Morrissey
Nissa & Patrick Knight	Derek & Julia Lisinski	Peter McAvinn	Asya Mosyak
Steve Knightly	Adam Littman	Beth McCarthy	Kaia Motter
Shannon Kocotis	Beixiao Liu	Robyn McCoy	Tracy Muise
Adam Koncius	Maura Locke	Shannon McCuiston	Masano Murata
C. J. Korisky	Elizabeth Locurto	Kathy McCullen	Leeann Murphy
Paulina Koutroubis	Amy Loewenberg	Lisa McElheny	Ross Murphy
Justin Koziak	Barbara Longo	Michael McGovern	Robert & Stephanie Murray
Emmanuel Krakaris	Adriana Lopez-Alt	Marlin McGrath	Ashok Nagrath
Robert Krieger	Marita Lorenzo	Terry McGuire	Vipul Nagrath
Michael & Toby Kumin	Matthew Lotfey	Amy Hutton & Pod John	Beth Nakamura
John Kuok	Greer Love	Mcllwaine	Susan Natland
Jennie Kurtz	Martha Lovvoll	Carolyn McKibbin	Marlissa Brigggett & Peter
Aniela Kuzon	Susan Low	Bob McKinnon	Necheles
Linda Kuzon	W. Mark Low	Monica McMann Lagerquist	Nebo Nedeljkovic
Tracy Kwiker	Mark Lownik	Kate McQuaid	Scott Negus
Anais La Rocca	Paula Luccio	Mary McRae	Matthew Nelson
Eileen LaBella	Ken Ludwig	James McSherry	Paul Nelson
Mark & Nicole LaCamera	Wendy Lyn	Bill McSparron	Robert Nelson
Katherine LaFrance	Jennifer Lynch	Courtney McSparron	Christine Nelson-Rivers
Monica A. Lagerquist	Shelley Lynch	Sandra McSparron	Nicholas Nesgos
Linda Lagos	Clint Lytle	Lindsay Mecca	Vicki Newberry
Tony Laing	Suzanne MacBain	Ashim & Shallini Mehra	Cheryl Newell
James Laliberte	Jessica Maccini	Gita Mehra	Maureen Newman
Doug Lalone	Darcy Madden	Amit & Ruchi Mehta	William Newsham
Celita Lamar	Vandana Madhavan	Jason Meinzer	Laura McTaggart & Tom
Peter W. Lambert	Lisa Madray	Megan Melvin	Nolan
Susan & William Landay	David Magidson	Raymond Mendez	John Nordmann
Amy LaPanne	John Mahoney	James Mento	Erik & Melissa Norton
Dean Larios Berlin	Barbara Malatesta	Terra Merriman	Sasha Novograd
Ashlee Laroche	Joe Malcoun	Philip Messina	Lindsey Nupp
Barbara & Urban Larson	Julio Maldonado	Carl Metzger	Irving Nussbaum
Colleen Lavery	Alisyn Malek	Debra Meyer	Nick Nyhan
Jeffery Lawley	James Malloure	Jessica Meyer	Brian & Maureen Oates
Beverly Lawrence	Katie Maloney	Katherine Meyer	Catherine O'Connell
Michael Lawton	Jaimie Mancham-Case	Jim Meyers	Billy O'Donnell
Charlotte Leatherman	Lauren F. Manganello	Jacqueline Michaud	Owen O'Keefe
Amy Leavitt	Fredrick Mann	Arsenio Miliam	Aimee Olivo
Lara Lechtenberg	Kebra Manning	Adam Miller	Deborah O'Neil
Hee Jung Lee	Thomas Manos	Christine Miller	Kathleen O'Neil
Saehan Lee	Kai Margarida-Ramirez	Linda Miller	Ellen Oppenheim
Yen Yao Lee	J. D. Margulici	Sarah Miller	John Orcutt
Adam Leeb	Clifford Marks	Heidi Milne	Katelyn O'Toole
John Leeman	Michael Marrero	Jordana Mirel	Alexander Ouvaroff
Andrea Leet	Guilford Marshall	Dudzile Mitall	Dave Pace
Brett Leghorn	Frances Marshman	Mara, Mark, & Miles	Maria Palleschi
Eric Lemberg	Christina Martel	Mittentag	Michelle Palmacci
Joshua Lerner	Brian Martin	Marilyn Mittentag	Nicole Palmer
Joe Lester	Douglas Marttila	Julie Mock	Anna Palomino
Natalie Levine	Troy Mashburn	William Moeser	Kristen Palumbo
Tamsin Levine	Jenna Masters	Syed Mohiuddin	Jayson Pankin
Jeff Levitt	Barbara Mates	Annie Moler	Kristy Papay
Charyn Levy	Alexander & Olivia	Colleen Molloy	Colleen & Greg Pappas
Eizabeth Lewin	Mathews	Gwen Montalto	Maria Parets
Walter Lewin	Damian Mathews	Deede Montgomery	Daniel Parsons
Ashley Liadis	Torey Mathews	Matthew Montgomery	Paul Paruk
Enoch Liang	Jensen Matlock	Paul Mooney	Kieanitra Paschal
Katie Libby	Eric Mattes	Patricia Moran	Jonathan Pate



## INDIVIDUAL DONORS (continued)

Karen Paterson	Beverly Rafuse-Boucher	Rachel Safer	Sammi Siegel
Andres Patino	Sukanya Ramakrishna	Allison Saia	Johnny Siever
Kristopher Paulsen	Troy Randall	Josh Saltman	Jake Sigal
Dorothy Pazin	Patricia Ranney	Mark Sanders	Josh Silverstone
Allison Peabody	Paul Ratcliff	Kathleen & Peter	Keith Simpson
Trinity Peacock-Broyles	Linda Rath	Santangelo	Cory Sinclair
Amanda Pearce	Daniel Ratliff	Lillian & Joseph	Erin Sinclair
Lynne Pearce	Joanna Ratner	Santangelo	Lisbeth Sinclair
Pamela Pedonti	Susan Rattner	Lucille Santarelli	Sarah Sinclair
Patricia Pelino	Abhinav Rawat	Kyle Sasena	Jacqueline Singleton
Andrew Pels	Jason Raznick	Alexander Saunders	Laura Siracusa
Phillip Pennington	Jean Redfield	Linda Scali	Julia Sisco
Frances Pepper	Sarath Rednam	Dominic Scalzi	Tamsin Skeels
Carol Perelson	James Reese	Kathleen Schaefer	Ana Skidmore
Christina Perez	Sarah Reid	Gary Schechner	Belia Slattery
Jennifer Perez	Sydney Reiner	Susan Schechter	Arlene Slavin
Ginny & Bryan Perkins	Marcia Reisman	Penelope Scheerer	Dori Sless
Lauren Perlmutter	Joanna Revelo	Kristy Schena	Lauren Sloat
Janet Perlot	Tori Rexford	Robert Scherer	Christophe M. Small
Kristi Perry	Megan Reynolds	Elliot Scherker	Michelle Small
Torin Peterson	Judith Richardson	Seth Schinfeld	Amy Smith
Laura Petterle	Vanessa Richardson	Bev Halliday & Nick	Azibo Smith
Breanna Pettinga	Gretchen Rickards	Schmid	David Smith
Frederick & Kathy	Reece B. Rickards	Cheryl Duddy	Drummond Smith
Philopena	Josephine Riddick	Schoenfeld	Pete Smith
Karen Piana	Denise Riemann	Kristin Schondorf	Shana Smithner
John Piccione	Donna Riley	Roberta Schott	Debbie Snyder
William Pickworth	Jon Rimanelli	Gina Schrader	Wayne Snyder
Christopher Picotte	Thomas Ringel	Jennifer Schraut	Vincent Soboleski
Noella Pierre	Edward S. Ritchie	Melissa Schreiber	Julie Solomon
Joan Pierre	Tom Roach	Alex Schroeder	Jeff Sommers
Jennifer Pintar	Lucia Robelo	Donald Schroeder	Thomas Sorbo
Debbie Platt	Mark Roberge	Evan Schwartz	Jeff Soutar
Shane Pliska	Steven Robert	Adrienne Scordato	Alanna Spada
Ilya Podolyako	Cathryn Roberts	Courtney Scott-Howard	Marjorie Spencer
Jeannette Pollard	Darryl Roberts	James Seavitt	Michelle Spencer
Keith Pomeroy	Michael Robin	Michael Sechrist	Walter Spencer
Jackie Pomposelli	Leandrew Robinson	Florence Segura	Kristin Stadelmann
Charles Poole	Rachel Rock	Tanya Sekhon	Tara Stadelmann
Brittany Porch	Mario Rodas	AnnMarie Weir Seldon	Ellen Stahl
Karley Porter	Andrea & Jose Romero	William Seligman	Christopher Stallman
Zeenat Potia	Julie Romero	Dina Selkoe	Justin Stanley
Alan Poulton	Henry W. Root, Esq.	Greg Selkoe	Nevin Steinberg
Bette Pounders	David Rosen	Christoph Jan Sepp	Anne Stericker
John Price	Sierra Rosen	Nathalie Serber	Mark & Wendy Sterling
Paige Price	Ronald Rosenberg	Lisa Serme	Jason Sternberg
Fernando Prieto	Judy Rosenblum	Dysen Shade	Scott Sternberg
Sherwin Prior	Cory & Ian Ross	Jerry Shafir	Jass Stewart
Elena Proakis	Gus Ross	Ravi Shah	Marnie & Stephen Stiglitz
Thomas Prybot	Hayes Roth	Melissa Shakro	Jane Stiglitz
Nick Pudar	Elizabeth Rowe	Cari Shapiro	Edward & Nicole Stimpson
Nancy Puleo	Michael Rowley	Ian Share	Abby Stover
Gabriella Pulham	Arlene Rozzelle	David Shear	Carolyn Stover
Sharon Pulliam	Bradley Rumble	Alfred Shehab	Sarah Stover
Ben & Kelly Putnam	Matt Runkle	Robert Sheridan	Randolph Sturup
Beth Putnam	Sara Rusea	John Sherman	Lianna Sugarman
Virginia Puzon	Marianne Rutter	Sig Shirodkar	Anne Marie Sullivan
Serena Quan	Marcus Ryle	Tricia Shortt-Ocasio	John D. Sullivan
Ulrich Quay	Mona Sabbah	Marilynn Shrater	Joseph Sutton
Brennan Quenneville	Irving & Juliet Sablosky	Samantha Siegal	Ralph Sutton
Antonio Quevedo	Renee Sack	Deborah Siegel	Michael Sweetland

## INDIVIDUAL DONORS (continued)

Jamie Swindle	Heather Torpey	Aaron Wasserman	Alexis Wolf
Mark Taber	Isabel Tourkantonsi	Paula Webb	Jan Wolter
Diana Tang	Caleb & Dede Tower	Dustin Weeks	Serena Wong
Arthur & Phyllis	Jim Travers	Stephen Weeks	Lynn Wood
Tannenbaum	Stephen Trien	Ashley Weigl	Janis Woodman
Francine Taras	Angela Trotta	Daniel Weigl	Natasha Woods
Marianne Tarczal	Brian Tuchalski	Ellen Weil	Ann Woodward
Carlie Tardino	Joanne Tupper	Faith Weiner	Peter Woodward
Seble Tareke	Christi M. Turner	Mallory Weinshall	Cori Worchel
Gabrielle Tarini	Lee Turner	Michael Weinshall	Daniel Wray
Jeri & Mark Tarini	Nancy Turner	Deborah Weinstein	Donald Wray
William Tarini	Christine Twining	Tracy Weisel	Michelle Wright
Susan Taylor	Gwen Tynes	Susan Welch	Amy Wrzesniewski
Christine Tempesta	Kevin Unger	Franklin Weldon	Frank Wuliger
Randy Termeer	Peter Vanderkaay	Fred Wendell	Dean & Lynne Xerras
Jeffrey Terrill	Jeffery Vaughn	Linda Whalen	Ravi Yadav
Philip Tesoriero	Jennifer Velardi	Tracy Whately	Danielle Yakabowskas
Joseph Texiera	Jan Verhage	Kim Ablon-Whitney & Matthew Whitney	Ksenia Yakustidi
Paul Thiebauth	Dawn Voorhees	Emily Whittaker	Lorraine Yalman
Charles Thomas	Rosemary Vrablic	Mary Whittemore	Ellen Yang
Chris Thomas	Kaela Vronsky	Leonard Wilczewski	Martha Yavers
Eric Thomas	Rohey Wadda	Carol Wilhelm	Lawrence Yermack
Jonathan Thomas	Griffin Wagner	Angela Williams	Rebecca York
Pamela Thomas	Jim Wagner	Sara Wilmer	Leonard Young
Susie Thomas	Lynn Wahlquist	Barbara Wilson	Lisa Young
Corie Thompson	Dennis Wald	David Wilson	Lee Younts
Gretchen Thompson	Arnold Waldner	Robert Wilson	Didi Yunginger
Kara Thompson	David Walker	Tammy Wilson	Kemi Yusuf
PJ Thompson	Kristen Walker	Melani Wilson-Smith	Zia Yusuf
Marisela Thorson	Elisabeth Wallace	Margo Wilt	Mary Zachos
Meghan Thress	Maria Walsh	Natalie Wiltshire	Eric Zacks
Robyn S. Tice	Leigh Walton Matthew Wang	Linda Winin	Kevin Zhang
Ali Titus	Alexandra Warbasse	Michael Winter	Ryan Zia
Virginia Todd	Carter Ward	Nick & Tricia Winton	
Judith Tolan	Ian Warthin	Scott Wloszek	
Cindy Tonnessen			



## IN-KIND DONORS

Community Action Partners (CAP)  
 Dan Sturman  
 Equity Office Properties  
 John Hancock  
 GroupM  
 Jack Design  
 Michael Brook Photography  
 Ned Farrell  
 Oxford Properties  
 Proskauer Rose  
 R2C Group  
 Ralina Shaw Public Relations  
 Robert Castagna Photography  
 Saunders Hotel Group  
 Shipp Consulting

*We do our best to list all individual, corporate, and foundation donors accurately. If you are not listed correctly, please let us know so we may amend any errors for the future.*



“Read to a Child has landed on a rare formula that brings enormous academic and socio-emotional benefit to children, and they can’t get enough of it!”

READ TO A CHILD MENTOR



