

Annual Report 2016



Read to a Child

Read to a Child is a national nonprofit that increases children's success in reading and in life by inspiring caring adults to read aloud to a child regularly. The organization envisions a future in which all children are read to, improving their chances of becoming healthy, productive members of society.

Dear Friend of Read to a Child

Thank you for your support in making 2016 the most successful year yet for Read to a Child. In the past school year, we served more at-risk students across the country in the Lunchtime Reading Program than ever before!

These 1,192 students were supported by a record high 1,501 volunteer reading mentors as well as more than 60 volunteer members of our combined national board of directors and regional boards of advisors. We also received support from 125 corporations and 850 individual/foundation donors, our highest totals yet. We are grateful and humbled by the investment of time, money, and expertise from all of these invaluable stakeholders!

2016 was also a year in which our visibility and national profile was significantly enhanced. Through well-publicized reading events across the country, we raised our profile and paved the way for more interest from prospective board members, volunteer readers, corporate sponsors and donors. From NFL champions and MLB pitchers to progressive mayors and well-known authors, luminaries crisscrossed the country in support of Read to a Child and children's literacy!

In this annual report, we are pleased to recognize the generosity of our major corporate donors at new corporate giving levels. Please see the corporate donor page in this report for more information, recognition, and our heartfelt thanks! During Fiscal Year 2017, we will be introducing new individual and foundation giving levels. These levels include the **Seuss Circle**, which recognizes individual and foundation donors who annually contribute \$1,000 or more and the **Caldecott Circle** which celebrates individual and foundation donors who contribute \$10,000 or more annually. Look for communication about how you can join these leadership giving circles and provide Read to a Child with much needed support.

We are grateful that your generosity helps us to address the fact that **80% of low-income children in the United States do not read proficiently by 4th grade and, of these struggling young readers, more than 1/4 will not graduate from high school*!**

We thank you for your continued support as we strive to improve these alarming statistics and provide more opportunities for success in school and in life to at-risk students across the United States.

In gratitude,

A handwritten signature in black ink, appearing to read 'Mark Tarini'.

Mark Tarini (Board Chair)

A handwritten signature in black ink, appearing to read 'Paul Lamoureux'.

Paul Lamoureux (CEO)

*Annie E. Casey Foundation, 2013 Report 'Early Warning Confirmed.'

PROGRAM NUMBERS

(2015–2016 SCHOOL YEAR)

1,192 students

35,760 sessions

of one-on-one reading time

1,501 volunteers

reading mentors



VOLUNTEER SATISFACTION

99%

of volunteers agreed
with the statement:

The Lunchtime
Reading Program
is an enjoyable and
meaningful experience
and would recommend
it to friends or
colleagues.

96%

of volunteers agreed
with the statement:

I feel good about
working for a
company that
offers opportunities
for community
involvement such as
lunchtime reading.



90%

of participating students made measurable
gains in one or more of the following areas:

- vocabulary
- listening comprehension
- ability to articulate thoughts
- self-confidence
- enthusiasm for books and reading
- reading more often by choice
- greater interest in classroom reading
- exposure to new ideas, knowledge, people and places
- school attendance
- overall reading ability



Regional Highlights

Boston

The Greater Boston Region is celebrating its 15th year of the Lunchtime Reading Program. Thanks to both veteran and new corporate partners, we grew the number of students served by 7% this year. In 2016, we started welcoming individual volunteers as well to strengthen our mission.

Nine of our schools began featuring a financial literacy program and three of our schools a STEM program as a new genre choice. Our mission was also celebrated this year by guest readers. Boston Mayor Marty Walsh read to students at the Adams School. New England Patriots' tight-end Martellus Bennett read a book that he authored to students at the Tobin School. These special reading guests generated excitement about reading and created engaging discussions with the children.

We thank all dedicated supporters for all that they do to make this happen; from supporting our successful annual Gala, Online Fundraising Campaign, and Trivia Night, to networking for our cause. Our students will remember this experience and benefit from it forever.



Detroit

Detroit, our newest location, started its fourth year of programming and saw two significant and exciting changes during 2016. First, we expanded into Pontiac, located 30 miles northwest of Downtown Detroit. Pontiac has a clear need for our support, with more than double the average US crime index (500 vs. 233), twice the average Michigan unemployment rate (10.7% vs 4.7%), and more than twice the Michigan average of adults who have not attained a high school degree (21.1% vs 9.8%).* Our host school, Herrington Elementary, is only minutes away from one of our most exciting new partners, Fiat Chrysler Automotive.

Secondly, in September 2016, Ky Lindberg was hired as Read to a Child's new Detroit Director. Ky has vast experience that includes working for the Detroit Newspaper Association, Congressman Sander Levin, managing school operations for two Detroit schools, and most recently coming from a role as the Communications and Resource Director at the Eastside Community Network. We are lucky to have Ky on the Read to a Child management team and have great confidence in the value she brings to the Detroit region and organization as a whole.

* 2015 statistics taken from <http://www.city-data.com/city/Pontiac-Michigan.html>

South Florida

Along with a 32% boost in number of children served, 2016 brought our South Florida location two important behind-the-scenes improvements. First, our South Florida regional board grew by 50%, bringing an influx of new talent and passion. We also had our most successful fundraiser yet, doubling donations thanks to strengthening corporate partnerships and extraordinary efforts of regional board members. Excitement and optimism abound as we are more poised than ever to serve more and more children who need us in Miami!

Regional Highlights

Connecticut

The Connecticut Lunchtime Reading Program continues to grow, providing a joyful and rewarding read aloud experience for both student and volunteer reader alike. In the 2015–2016 school year, Read to a Child in Connecticut expanded the scope and depth of its operation, offering a full school year of the Lunchtime Reading Program to students in Hartford, New Britain, and New Haven and successfully piloting the program with kindergarten students in Hartford. We served 17% more students this year! The first annual fundraiser in October 2015 increased public awareness and generated new supporters, partners, volunteers, and friends.

With the aid of new volunteers, we look forward to future Program expansion, serving more Connecticut students in more schools. In the simple words of one student, “My Lunchtime Reading day is the best day of the week.”



Los Angeles

Read to a Child in Los Angeles celebrates another successful year and is excited to have established a strategic partnership with the Los Angeles Dodgers Foundation to improve children’s literacy skills among those most at-risk in the Los Angeles city schools. Nichol Whiteman, Executive Director of the Los Angeles Dodgers Foundation, states:

“We are pleased to support Read to a Child and its innovative model of utilizing adult volunteers from area corporations to act as reading mentors in public schools. Initiatives and programs designed to improve the lives and literacy skills of those most underserved in the community are a significant focus of our foundation. We are honored to bring Dodger players and alumni into classrooms as positive role models in order to highlight the importance of literacy and help build a lifelong love of reading at an early age.”

Los Angeles also welcomed three new corporate reading partners from Mattel, Wpromote, & TrueX to serve students on our waiting list. The time spent with a caring adult ignites a love of reading as well as the literacy skills and self-confidence our students need to succeed in school. One of our new volunteers stated:

“I have noticed improvement in William’s reading comprehension when we read more advanced books. Even if he does not understand certain words, he really gets the story and retains the information from when we stop and finish a book later.” —TrueX volunteer



Athletes and politicians raise awareness of Read to a Child's mission



Boston Mayor Marty Walsh reads to Lunchtime Reading Program students at the Adams Elementary in Boston.



Super Bowl champ and children's book author Martellus Bennett reads to Lunchtime Reading Program students at the Tobin Elementary in Boston.



Los Angeles Dodgers Pitcher, Rich Hill, reads to Lunchtime Reading Program students at the Politi Elementary in Los Angeles.



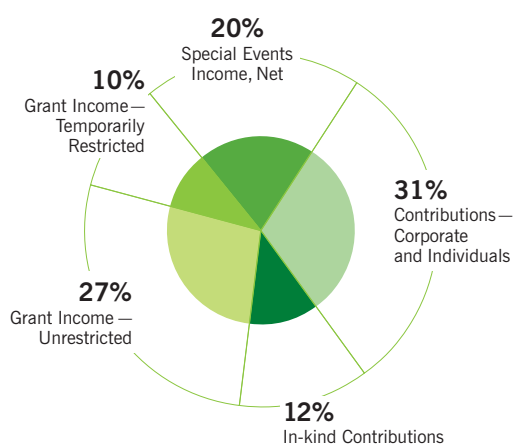
Hartford Mayor Luke Bronin reads to Lunchtime Reading Program students at the Betances Elementary in Hartford.

Financials

for the fiscal years ending 9/30/16 and 9/30/15

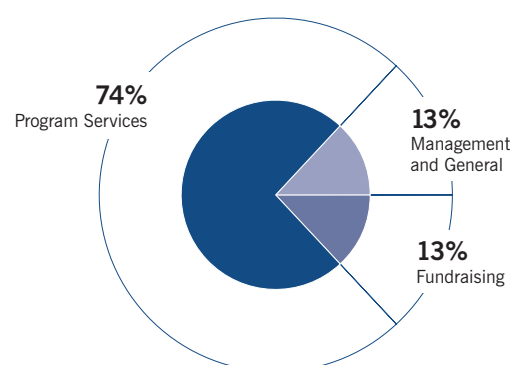
Support and Revenue	FY16	FY15
Contributions	\$396,268	\$457,275
Grant Income - Unrestricted	340,331	308,719
Grant Income - Temporarily Restricted	120,750	114,633
Special Events Income, Net	250,667	189,290
In-kind Contributions	153,090	225,895
Other Revenue	1,740	33
Total Support and Revenue	\$1,262,846	\$1,295,845
Expenses		
Program Services	\$904,135	\$877,304
Management and General	157,665	172,866
Fundraising	168,788	147,782
Total Expenses	\$1,230,588	\$1,197,952
Increase in Net Assets	\$32,258	\$97,893
Assets	9/30/16	9/30/15
Cash and Cash Equivalents	\$568,749	\$562,416
Other Current Assets	97,924	20,072
Property and Equipment, Net	17,673	31,417
Total Assets	\$684,346	\$613,905
Liabilities and Net Assets		
Deferred Income	\$74,000	\$49,000
Other Current Liabilities	53,809	40,626
Unrestricted Net Assets	430,249	409,646
Temporarily Restricted Net Assets	126,288	114,633
Total Liabilities and Net Assets	\$684,346	\$613,905

FY16 Support and Revenue



FY16 Expenses

(excluding in-kind of \$153K or 12% of total expenses)



In addition to the 74% of expenses that directly support our Programs, thank you to the more than 1,500 volunteer reading mentors who donated their time to Read to a Child's Lunchtime Reading Program in FY16.

Board of Directors

10/1/15–9/30/16

Mark Tarini*

Chair

Partner

Arclight Capital Partners

Peter Necheles*

Treasurer

Senior Vice President,

Corporate Development & Chief Legal Officer

Agero

Julie Solomon

Secretary

Deputy General Counsel

Pitney Bowes

Brett Barfield

Partner

Holland & Knight

Ruth Bramson*

Retired Chief Executive Officer

Girl Scouts of Eastern Massachusetts

David Brewer

President

Brewer Leadership Group, LLC

Phil Harrell

Chief Sales Officer, Strategies

SiriusDecisions

Desiree Ivey

Executive Director of Teacher Training

Shady Hill School

Paul Lamoureux*

Chief Executive Officer

Read to a Child

Tecla Palli-Sandler

HR Coach and Consultant

Tracy Pearce

CSR & Marketing Consultant

Arthur Tannenbaum*

Honorary Board Member

Founder

Everybody Wins!

Staff Leadership

Paul Lamoureux*

Chief Executive Officer

Kaela Vronsky*

Vice President, Program Management

Beth Putnam*

Director of Finance and Operations

Kristen Baxter*

Boston Director, Development

Linda Winin*

Boston Director, Program

Gina Broadbent*

Connecticut Director

Alex Fey*

Los Angeles Director

Ky Lindberg*

Detroit Director

*Also Volunteer Reader

ORGANIZED
GREAT PROGRAM
SMOOTH
LOVE
WONDERFUL
GREAT JOB

Teacher Perspectives on Program Operations

Regional Board of Advisors

10/1/15–9/30/16

Boston

Jason DeMarzo—CHAIR
New York Life

Katharine Beattie
Mintz Levin

Feng Chang
Rue La La

Kathleen Chardavoyne*
State Street Corporation

Dorree Gurdak
Weber Shandwick

Olivia Mathews*
Boston College

Mark J. Minichiello*
Acadian Asset Management LLC

Nancy Puleo*
Posternak Blankstein & Lund LLP

Jennifer Roffi*
Cabot Corporation

Cory Sinclair*
Dassault Systemes

Jeff Stone
Retired CEO

Vicki Sullivan*
BNY Mellon

Mark Tarini*
ArcLight Capital Partners

Robyn Tice*
Eaton Vance

Connecticut

Sean Datcher*—CHAIR
Travelers

Christine Ford*
McKesson/Moore Medical

Holly Lerose*
Travelers

Keith Morriss
Forester Capital, LLC

Paul Sapiro
UBS Financial Services, Inc.

Ellen J. Stoltz
Educational Consultant

Richard J. Wasserman*
Day Pitney LLP

Detroit

David C. Walker*—CHAIR
Level One Bank

Kristin Schleicher—VICE CHAIR
Ernst & Young

Robbyn K. Ennis*
Carat/Aegis Media

John James
James Group International

Fernando Prieto
Pau Gasol Enterprises

Kimberly Stover
McKinsey & Company

Chris Thomas*
Fontinalis Partners

Ashley Weigl
University of Michigan

Los Angeles

Eva Davis*—CHAIR
Winston & Strawn LLP

Greg Barnes*
Lockton Companies

Chris Burt*
Capital Group

David Cormack*
Ernst & Young, LLP

Judith Gordon*

Luke Guerra*
Kirkland & Ellis LLP

Adriene Plescia Lynch*
Alston & Bird LLP

South Florida

Eric Funt*—CHAIR
Holland & Knight

Stuart Gitlitz*

Tran King
H.I.G. Capital

Gustavo Oliveira
MP&D Holdings Company

Debbie Platt*
Assurant

Ian Ross*
Greenberg Traurig

Jason Sternberg*
Hogan Lovells US LLP



*Also Volunteer Reader

Donors FY16 for the fiscal year ending 9/30/16

CORPORATE DONORS

\$25,000 +

Agero*
ArcLight Capital Partners*
BNY Mellon*
Cabot Corporation*
New York Life*
Pitney Bowes
Staples*
Target
TJX Companies*
Travelers* Foundation



\$10,000 – \$24,999

Assurant*
BJ's*
Bloomberg*
Capital Group Charitable
Foundation*
Eastern Bank*
Eaton Vance*
Ernst & Young LLP*
Holland and Knight*
Integrity Services
Liberty Mutual
Los Angeles Dodgers
Foundation
MassMutual*
MilliporeSigma*



*Provides Volunteer Readers

CORPORATE DONORS (Continued)

\$5,000 – \$9,999

Acadian Asset Management*
 Alston & Bird LLP*
 Blue Hills Bank*
 Boston Bruins Foundation
 Bracewell & Giuliani LLP
 Commonwealth
 Financial Network*
 Constant Contact*
 Dassault Systèmes*
 Detroit Manufacturing Systems
 DIRECTV*
 Eagle Investment Systems*
 Imagitas*
 Kirkland & Ellis*
 Lakeside Properties
 Mattel Children's Foundation*
 Microsoft
 Posternak Blankstein
 & Lund LLP*
 Quicken Loans*
 Sanofi Genzyme*
 Staples Center Foundation*
 Sun Life Financial*
 The Children's Trust*
 Wayfair*

\$1,000 – \$4,999

Anderson Robbins Research
 Biogen*
 Blackbaud*
 Bose Corporation*
 Boston Heart Diagnostics*
 Boston Scientific*
 Charles River Associates*
 CTP*
 Delaware Life*
 Destination Media
 Dykema Gossett PLLC
 Flagstar Bank
 Gentle Giant*
 Greenberg Traurig LLP*
 Harvard Pilgrim Health Care*
 Health Advances*
 Hogan Lovells US LLP*
 Housing Trust Group
 Innovation Capital
 Lee Kennedy Company*
 Level One Bank*
 Los Angeles Girl Scout
 Council Troop #601
 Massachusetts
 Medical Society*

MIT Community Service Fund*
 Morgan Stanley
 Murtha Cullina LLP
 MutualOne
 Partners Healthcare*
 Pfizer
 PwC
 Rainbow Child Care Center
 RBS Citizens
 Renaissance
 Global Logistics, LLC
 Seyfarth Shaw LLP
 SS&C Technologies
 St. Mary's Credit Union*
 Stanley Black & Decker*
 Talmer Bank & Trust
 The Hartford
 Townsend Search Group
 Tufts Health Plan*
 UBS
 US Bank
 Veritext
 Walmart Foundation
 Willis of Connecticut, LLC

*Provides Volunteer Readers

LOVE OF READING
CONFIDENCE
INTEREST IN READING
EXCITEMENT
 ENTHUSIASM FOR BOOKS AND READING READING ABILITY
ATTENTION
ENJOY READING

Teacher Perspectives on Student Gains



INDIVIDUAL & FOUNDATION DONORS

\$10,000+

Clinton & Wilma Shattuck
Charitable Trust
Ellen Abbott Gilman Trust
Dan Revers
Jeri & Mark Tarini*
Weingart Foundation
William E. Schrafft & Bertha E.
Schrafft Charitable Trust

\$1,000–\$9,999

Gabriella Ansari
John Antonczak
Peter Arden
Sophie Barratt
Eric Baughman*
Katharine & Michael Beattie
David Brewer
Chris Burt
Christopher Cheever
Allison Chock
Dave & Michelle Cormack
Peter Cote*
David & Kristina Daglio
Philip Davidson & Julia Twarog
Eva Davis*
Abby & Jason DeMarzo
Dornam Foundation
Eugene F. Fay Trust
Fairfield County's Community
Foundation—Donor Advised Fund
Fanny & Svante Knistrom
Foundation
Robert & Susan Flammia
Foundation for Metrowest
Shane Gianino
Stuart Gitlitz*
Dorree Gurdak
Brooke & Philip Harrell
Henry E. Niles Foundation, Inc.
Billy & Kimberly Hewlett
J. Walton Bissell Foundation
Derek & Julia Lisinski
Mark and Susan Low*
Kent & Kristen Lucken
Erin & Mark Minichiello*
Peter Necheles & Marissa Briggett*
NewAlliance Foundation
Denise Nicoli-Roche
Tracy Pearce
Pamela & Patrick Pedonti
Joel Phipps
Nancy Puleo*
Chris Richard
Paul Sapiro
Kristin Schleicher

Courtney Scott
Larry Shulman
Cory & Erin Sinclair*
Marnie & Steve Stiglitz
Vicki Sullivan*
Nicole and Thomas Teich*
Christopher Thomas &
Nicole George*
Robyn Tice*
David & Elizabeth Walker*
Winnick Family Foundation
Robert Zeraschi

\$500–\$999

Chris Anderson
Courtland Anderson
Brett Barfield
Gregory Barnes
Berman Family Foundation
Ruth & Shelly Bramson*
Gina & Jeff Broadbent*
Matthew Broder
Thomas Bruetsch
Kristin Buker
Feng Chang
Katherine & Kevin Conway*
Robert Diehl, Jr.
Fredrick Dindoffer
Doe Family Foundation
Debra Doncov
FCA Foundation
John Freese
Aleene & Joseph George
Jennifer Gilbert
Judith Gordon
Elizabeth Itkowsky*
Jacqueline Gannon Fund of
the Foundation for MetroWest
Megan & Michael Kaczmarek
Mark Kiefer
Elaine Kiley*
Jim Klapman*
Paul Knight
Paul Lamoureux*
Richard Lawson
Brian & Holly Lerose*
Raphael Lewis*
Alexander & Olivia Mathews*
Peter McAvinn
Michael McGovern*
McKesson* Foundation
Lee-Ann Murphy
Luke Nowacki
Beth & Dean Putnam*
Reese Rickards

Cory & Ian Ross*
Jon & Teri Shipp
Michael Stack
Ellen Stoltz
Leigh-Ann Szabo
Rich Terres
Joe Texeira
Pamela Thomas
Dawn Tice
Ariel Vinson
Richard Wasserman*
Ray Waters
Michael Weil

IN-KIND DONORS

Atrium PR
Bedrock
Clear Channel
CTP*
Douglas Emmett Management, LLC
Full Impact Studios
Gentle Giant*
Jack Design
Joanne Tupper
John Hancock
Johnny Burke
Martellus Bennett
Mary Pope Osbourne's Classroom
Adventures Program
Alexander & Olivia Mathews
Michael Brook Photography
Ned Farrell
OUTFRONT Media
Oxford Properties
Posterscope
R2C Group
Ralina Shaw Public Relations
Reese Rickards
Robert Castagna Photography
Shipp Consulting
The Imagination Agency
Timbuktu Labs
Weber Shandwick

We do our best to list all individual, corporate, and foundation donors accurately. If you are not listed correctly, please let us know so we may amend any errors for the future.

*Also Volunteer Readers

